



# G-FORCE™ II PRESSURE WASHERS

Graco's Complete Line of Professional  
Pressure Washers



PROVEN QUALITY. LEADING TECHNOLOGY.



# HIGH QUALITY, LONG-LASTING GRACO PRESSURE WASHERS

Experienced contractors know the difference. Graco professional pressure washers are recognized as solid investments that perform reliably, year after year.

## TRUST YOUR BUSINESS AND REPUTATION TO GRACO

Graco is committed to providing the highest quality pressure washers available, backed by industry's best warranty.

## AMERICAN BUILT QUALITY SINCE 1926

100% factory-tested and field-proven Graco professional pressure washers are designed and manufactured in the USA with global components.

## INDUSTRY-BEST WARRANTY

Behind every Graco sprayer is the industry's best warranty. You may never use Graco's warranty — but if you do, we will be there.



## GRACO SOLUTIONS THAT KEEP YOU SPRAYING



### DRIVE OPTIONS FOR ULTIMATE PRODUCTIVITY

- Direct Drive for compact and lightweight performance
- Belt Drive delivers longer life and less vibration



### THE MOST RELIABLE PUMPS IN THE INDUSTRY

- Premium CAT Pump® on select Graco pressure washers
- The most durable, longest-lasting pumps available
- 2X longer life than other pumps



### RELIABLE, POWERFUL HONDA® GX ENGINES

- Oil Alert shuts down engine to prevent damage if oil level drops too low
- Thermal sensor prevents pump from overheating in bypass mode



### 100% HEAVY-GAUGE ALUMINUM FRAMES

- Up to 40% lighter than steel frames and standard on all Graco models
- Corrosion resistant to water and chemicals
- Lifetime Warranty



### EXTERNAL PRESSURE UNLOADER FOR TROUBLE-FREE, ADJUSTABLE PRESSURE

- Ability to match application requirements
- Keeps water cooler and prolongs pump life
- Available on 4040 GP and CAT Pumps



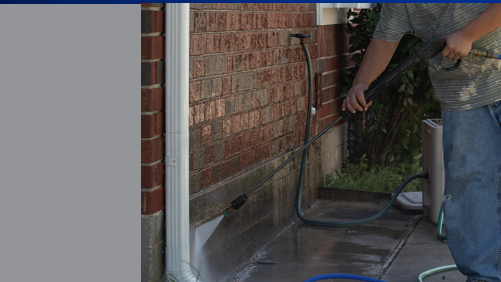
### EZ START PRESSURE RELIEF FOR EASIER STARTING

- Allows water to bypass pump to eliminate pressure build up in the system — standard Graco feature
- No need to pull the gun trigger while starting the washer



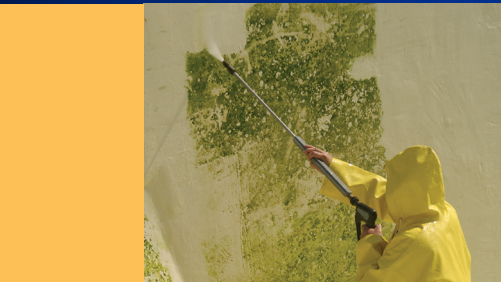
# CHOOSE THE RIGHT PRESSURE WASHER

Whether you need a pressure washer for occasional cleaning or regular all-day cleaning and surface preparation jobs, our mission is to fit you to the pressure washer that is sized for the work you do to get the job done right, every time.



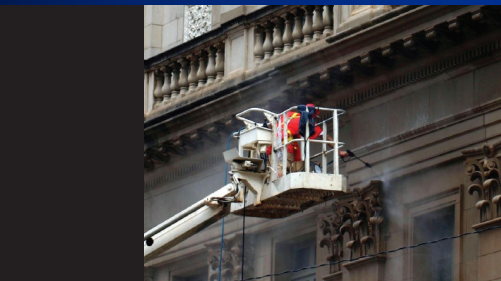
**EVERYDAY RELIABILITY**  
**Residential Remodeler or Property Maintenance**

- Pressure washing multiple days a month
- Typically working on smaller jobs
- Demanding everyday reliability



**HIGHER POWER & FLOW**  
**Large Residential and Commercial Contractor**

- Pressure washing multiple days a week
- Tackling medium to large projects
- Moving frequently from job to job



**SUPERIOR POWER & DURABILITY**  
**Large Commercial or Industrial Contractor**

- Pressure washing continuously in less-than-ideal conditions
- Working on large, long-duration projects requiring the most power
- Require extreme durability and reliability

Answer the following questions and refer to the chart to the right to help determine the pressure washer size and capability that best meets your needs

**HOW OFTEN WILL YOU BE USING THE PRESSURE WASHER?**

- 10-20 hours/week
- 20-30 hours/week
- 30+ hours/week

**WHAT TYPE OF CLEANING WILL YOU DO?**

- Surface Cleaning
- Concrete Striping
- Mildew/Mold
- Commercial Buildings and Equipment

**WHAT IS YOUR BUDGET?**

- \$
- \$\$
- \$\$\$

## PRESSURE WASHING SOLUTIONS GUIDE



	REMODELER AND PROPERTY MAINTENANCE	LARGE RESIDENTIAL AND COMMERCIAL	LARGE COMMERCIAL AND INDUSTRIAL
Weekly usage	10-20 hr/week	20-30 hr/week	30+ hr/week
Pressure (psi)	3200-4200	4000-4200	4000
Budget	\$	\$\$	\$\$\$
Flow (gpm)	2.5 – 4.0	4.0	4.0
Drive Type	Direct	Direct	Direct & Belt
Pump Type	Forged Brass Triplex	Forged Brass Triplex	Forged Brass Triplex
Unloader	Integrated, Adjustable Pressure	Integrated & External, Adjustable Pressure	External, Adjustable Pressure
FEATURES			
Non-Marking Hose	50 ft	50 ft	50 ft
High Pressure Gun and Wand	Professional Grade Gun, 36 in Wand with Quick-Connects	Professional Grade Gun, 36 in Wand with Quick-Connects	Professional Grade Gun, 36 in Wand with Quick-Connects
Spray Tips	4	4 or 5	5
Chemical Injector Kit	Yes	Yes	Yes
50 Mesh Inlet Filter	Yes	Yes	Yes
Thermal Relief Valve	Yes	Yes	Yes
EZ Start Pressure Relief	Yes	Yes	Yes
MODELS			
	3325 HA-DD	4240 HA-DD	4040 HG-BD
	3230 HA-DD	4040 HG-DD	4040 HC-DD
	4240 KA-DD		4040 HC-BD



# TECHNOLOGY THAT MAKES THE DIFFERENCE

## KEY FEATURES TO CONSIDER FOR MAXIMUM PRODUCTIVITY

While pressure washers are simple machines, understanding the key components and differences will help you make the right purchase.



### THE ENGINE

**Commercial grade Honda or Kohler® engines vs lower quality, off-brand engines**

- Brand name manufacturers in the business of building great engines
- Proven reputation for quality and on-going support and service



### THE WATER PUMP

**Professional-grade Triplex plunger pumps vs consumer-grade Axial pumps**

- AR, GP & CAT pumps vs lower quality, off-brand pumps
- Forged Brass Manifold-on all Graco reduces heat to extend life vs stainless steel caps and manifold
- Good, Better, Best options on quality, serviceability and life of the pumps

### THE FRAME

**Lighter frames are easier to handle**

- Aluminum frame — a standard Graco feature that's lightweight, resistant to rust, and easy to move around the jobsite
- Steel frame — heavy, harder to move and load-in the truck

**Look for durability in the axle to ensure the frame remains constant and square**

- Professional-grade ¾ in axles vs smaller 5/8 in axles on lower quality models

### THE PRESSURE UNLOADER

Letting the motor run while not spraying can build up pressure and excess heat in the system causing the pressure washer to overheat and shut-down. The pressure unloader prevents overheating and prolongs the life of your sprayer.

Adjustable pressure unloaders, a standard Graco feature, vs fixed unloaders allow you to vary the pressure based on the application.

**INTEGRATED** — Ideal for jobs with constant spraying while the motor is running

**EXTERNAL** — Ideal for longer jobs with lots of stops and starts. Allows water to run cooler for greater protection against overheating.



Model Shown: 4240 KA-DD

## EVERYDAY RELIABILITY

**REMODELER & PROPERTY MAINTENANCE**

G-Force II 3325 HA-DD, 3230 HA-DD and 4240 KA-DD pressure washers are the best choices for medium duty applications. They're light, compact, and the perfect choice when you need consistent reliability for the occasional cleaning job.

Honda Engine, AR Pump, 3300 psi, 2.5 gpm	3325 HA-DD
Honda Engine, AR Pump, 3200 psi, 3.0 gpm	3230 HA-DD
Kohler Engine, AR Pump, 4200 psi, 4.0 gpm	4240 KA-DD



Model Shown: 4040 HG-DD

## HIGHER POWER & FLOW

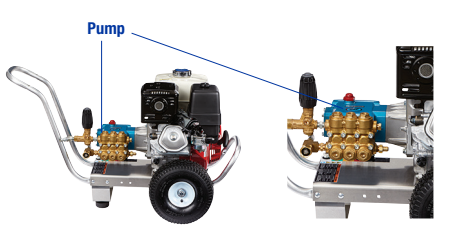
**LARGE RESIDENTIAL OR COMMERCIAL**

G-Force II 4240 HA-DD and 4040 HG-DD pressure washers are built tough to handle weekly use and deliver high flow and pressure in a compact, durable package.

Honda Engine, AR Pump, 4200 psi, 4.0 gpm	4240 HA-DD
Honda Engine, GP Pump, 4000 psi, 4.0 gpm	4040 HG-DD

## BELT DRIVE VS. DIRECT DRIVE

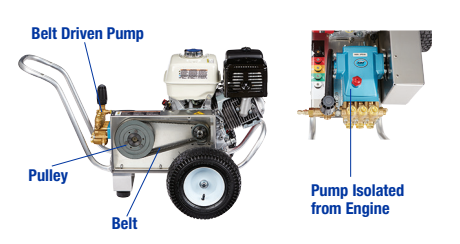
There are two main types of pressure washers that deliver top performance. The main difference being life. Choosing the right type depends on how often you will be using the sprayer.



### DIRECT DRIVE

**Compact Design, Lighter Weight, Fewer Components**

- The pump is connected directly to the drive shaft of the engine
- Pump rpm matches that of the engine (usually around 3500 rpm)



### BELT DRIVE

**Lower RPM/Operating Temperature, Longer Pump Life**

- The pump is connected to a pulley and belt system that is connected to the engine
- Allows the pump to run at a much lower rpm (typically 900-1700 rpm)
- The pump is mounted away from the engine and has a crankcase with more oil capacity
- Allows the pump to run much cooler than a direct drive pump
- The pump vibrates less and suffers less pump fatigue



Model Shown: 4040 HC-BD

## SUPERIOR POWER & DURABILITY

**LARGE COMMERCIAL OR INDUSTRIAL**

G-Force II 4040 HC-DD, 4040 HG-BD and 4040 HC-BD pressure washers are Graco's top-of-the-line units, designed to tackle the toughest cleaning jobs. With the highest performance available for tough, all-day cleaning and surface preparation, these models can easily handle even the most demanding jobs.

Honda Engine, CAT Pump, 4000 psi, 4.0 gpm	4040 HC-DD
Honda Engine, GP Pump, 4000 psi, 4.0 gpm	4040 HG-BD
Honda Engine, CAT Pump, 4000 psi, 4.0 gpm	4040 HC-BD



# TIP SELECTION

## MAXIMIZE YOUR CLEANING POWER

### TIP ORIFICE SIZE

You can maximize your cleaning power by selecting the tip that best matches the maximum pressure and flow of your pressure washer from the chart below.

For lower pressure spraying, choose a larger size tip to maximize your flow and cleaning power.

GPM	1500 PSI	2000 PSI	2500 PSI	3000 PSI	3500 PSI	4000 PSI
2.0	3.5	3.0	3.0	3.0	3.0	3.0
2.5	4.0	3.5	3.0	3.0	3.0	3.0
3.0	5.0	4.5	4.0	3.5	3.0	3.0
3.5	5.5	5.0	4.5	4.0	3.5	3.5
4.0	5.5	5.5	5.0	4.5	4.5	4.0

### TIP ANGLE

Different tip angles are used for different jobs as noted in the chart below.

	0 DEGREE RED	15 DEGREE YELLOW	25 DEGREE GREEN	40 DEGREE WHITE	CHEMICAL BLACK
DESCRIPTION	Cutting Tip	Chiseling Tip	Flushing Tip	Washing Tip	Chemical Tip
USE	Delivers a concentrated stream that can gouge or cut.	Works like a scraper when used at a 40° angle.	Most common nozzle for general cleaning.	Wide spray for washing or rinsing a large area.	Low pressure nozzle for use with detergent injector.
TYPICAL JOBS	Removing stains from concrete or other hard surfaces.	Stripping paint; removing grease, mildew and stains.	Cleaning dirt from siding, sidewalks, outdoor furniture, etc.	Washing vehicles, windows, aluminum siding and other delicate surfaces.	Applying detergent, misting and rinsing.

### TIP PART NUMBERS

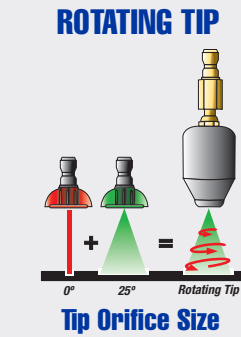
Use the chart below to find the right Graco G-Force II tip part number.

ORIFICE SIZE	0 DEGREE RED	15 DEGREE YELLOW	25 DEGREE GREEN	40 DEGREE WHITE	SET OF 4 TIPS (0, 15, 25, 40)
2.7	805591	805592	805593	805594	-
3.0	805535	805536	805537	805538	244768
3.5	805539	805540	805541	805542	244769
3.7	805595	805596	805597	805598	-
4.0	805543	805544	805545	805546	800708
4.5	805547	805548	805549	805550	800709
5.0	805551	805552	805553	805554	800710
5.5	805555	805556	805557	805558	
CHEMICAL INJECTOR TIP					805634



### ROTATING AND OSCILLATING TIPS

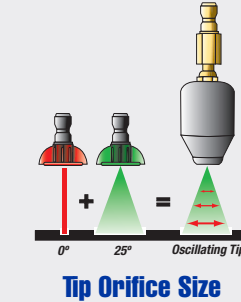
Rotating and oscillating tips increase your cleaning power and decrease your cleaning time. They offer 0° spray impact with 25° coverage. Tips include filter with quick connect and offer heavy-duty components for long life and reliability. For use on sidewalks, driveways, track vehicles, muddy areas, old peeling paints and concrete surfaces.



3.5 - Part Number 198012

4.0 - Part Number 198014

### OSCILLATING TIP



3.5 - Part Number 198013



# ACCESSORIES

## SPEND LESS TIME. MAKE MORE MONEY.

Maximize your performance and get to the next job faster by customizing your washer with Graco Accessories.

GUNS			
244784	Professional Grade Gun with 36 in (91 cm) Wand		
244785	Professional Grade Gun Only		
EXTENSIONS			
116564	Telescoping Wand Extension: 6-18 ft (1.8 m - 5.5 m)	17A536	Wand Extension: 4 ft (1.22 m)
16X669	Telescoping Wand Extension: 6-24 ft (1.8 m - 7.3 m)	16X668	Wand Extension: 6 ft (1.82 m)
16X670	Tele-Pole Belt – For use with Telescoping Wand Extensions	17A537	Wand Extension: 8 ft (2.43 m)
17A534	Wand Extension: 12 in (0.30 m)	17A538	Wand Extension: 10 ft (3.0 m)
17A535	Wand Extension: 3 ft (0.91 m)		
HOSE REELS AND NON-MARKING HOSE			
244783	3/8 in x 50 ft (10 mm x 15 m) Non-marking Hose with Quick Disconnects		
16X667	3/8 in x 100 ft (10 mm x 30 m) Non-marking Hose with Quick Disconnects		
16X665	Hose Reel Kit: 100 ft (30 m) hose capacity, 3500 psi (240 bar)		
16X664	Hose Reel Kit: 100 ft (30 m) hose capacity, 5000 psi (345 bar)		
PRO PAK – Promotional pricing with a purchase of any Graco pressure washer			
25N726	Includes: 18 in (45.7 cm) Surface Cleaner, 6 ft (1.8 m) Extension, Ball Valve, Gutter Cleaner, Roto Nozzle		
25N727	Includes: 20 in (50.8 cm) Surface Cleaner, 6 ft (1.8 m) Extension, Ball Valve, Gutter Cleaner, Roto Nozzle		
WET SANDBLASTING			
244766	Sandblasting Kit – Includes: fittings, couplers, clamps, adapters, housing sealant and hose assembly (tip not included)		
805321	Sand Blast Tip		
HORIZONTAL SURFACE CLEANER			
16X666	18 in (45.7 cm) diameter		
116562	20 in (50.8 cm) diameter		
COUPLERS AND ATTACHMENTS			
16X682	Parts Box – Most common tips, couplers, o-rings	16X673	Male Socket, 1/4 in (6.4 mm) HP QD
16X680	Gutter Cleaning Attachment	16X677	Male Plug, 1/4 in (6.4 mm) HP QD
16X679	Ball Valve Water Shutoff	16X678	Male Plug, 3/8 in (9.5 mm) HP QD
127529	Chemical Injector Kit with QDs	16X674	Male Socket, 3/8 in (9.5 mm) HP QD
801112	Pump Inlet Screen	16X675	Female Plug, 1/4 in (6.4 mm) HP QD
801009	Coupler for Wand Extensions 1/4 in (6.4 mm)	16X676	Female Plug, 3/8 in (9.5 mm) HP QD
16X671	Female Socket, 1/4 in (6.4 mm) HP QD		
16X672	Female Socket, 3/8 in (9.5 mm) HP QD		
FLUID			
246377	Pump Oil, 32 oz (1 L) – Use with Triplex Plunger Pumps		





		G-Force II 3325 HA-DD	G-Force II 3230 HA-DD	G-Force II 4240 KA-DD	G-Force II 4240 HA-DD
MODEL	Part Number	25N638	25N639	25N640	25N641
SPECIFICATIONS	Category	Residential Remodeler / Property Maintenance	Residential Remodeler / Property Maintenance	Residential Remodeler / Property Maintenance	Large Residential / Commercial
	Weekly Usage	10-20 hr/wk	10-20 hr/wk	10-20 hr/wk	20-30 hr/wk
	Pressure psi (bar)	3300 (227)	3200 (220)	4200 (290)	4200 (290)
	Flow gpm (lpm)	2.5 (9.5)	3.0 (11.4)	4.0 (15)	4.0 (15)
	Cleaning Units (psi x gpm)	8250	9600	16800	16800
	Frame	Aluminum	Aluminum	Aluminum	Aluminum
	Weight lbs (kg)	57 (26)	76 (34)	104 (47)	102 (46)
	Water Pump	AR, Triplex Plunger Pump	AR, Triplex Plunger Pump	AR, Triplex Plunger Pump	AR, Triplex Plunger Pump
INCLUDES	Unloader Type	EZ Start, Adjustable Pressure Integrated into pump	EZ Start, Adjustable Pressure Integrated into pump	EZ Start, Adjustable Pressure Integrated into pump	EZ Start, Adjustable Pressure Integrated into pump
	Engine	Honda GX200	Honda GX270	Kohler CH440	Honda GX390
	Hose Assembly	3/8 in (.95 cm) x 50 ft (15 m), non-marking w/ Quick Connects	3/8 in (.95 cm) x 50 ft (15 m), non-marking w/ Quick Connects	3/8 in (.95 cm) x 50 ft (15 m), non-marking w/ Quick Connects	3/8 in (.95 cm) x 50 ft (15 m), non-marking w/ Quick Connects
	Gun/Wand Assy	Professional Grade Gun, 36 in (91 cm) w/ Quick Connect	Professional Grade Gun, 36 in (91 cm) w/ Quick Connect	Professional Grade Gun, 36 in (91 cm) w/ Quick Connect	Professional Grade Gun, 36 in (91 cm) w/ Quick Connect
	Chemical Injector	Integrated, Kit Included	Integrated, Kit Included	Integrated, Kit Included	Integrated, Kit Included
	Tips	2.7 Orifice 0° Red - 805591 15° Yellow - 805592 25° Green - 805593 Black - Chemical Injector - 805634	3.5 Orifice 0 Red - 805539 15 Yellow - 805540 25 Green - 805541 Black Chemical Injector - 805634	3.7 Orifice 0° Red - 805595 15° Yellow - 805596 25° Green - 805597 Black - Chemical Injector - 805634	3.7 Orifice 0° Red - 805595 15° Yellow - 805596 25° Green - 805597 Black - Chemical Injector - 805634
WARRANTY	Warranty	Coverage against defects in material and workmanship: 1 year on all components 5 years on AR pump 3 years on Honda engine Lifetime on frame	Coverage against defects in material and workmanship: 1 year on all components 5 years on AR pump 3 years on Honda engine Lifetime on frame	Coverage against defects in material and workmanship: 1 year on all components 5 years on AR pump 3 years on Kohler engine Lifetime on frame	Coverage against defects in material and workmanship: 1 year on all components 5 years on AR pump 3 years on Honda engine Lifetime on frame



		G-Force II 4040 HG-DD	G-Force II 4040 HC-DD	G-Force II 4040 HG-BD	G-Force II 4040 HC-BD
MODEL	Part Number	25N681	25N682	25N683	25N684
	Category	Large Residential / Commercial	Large Commercial / Industrial	Large Commercial / Industrial	Large Commercial / Industrial
	Weekly Usage	20-30 hr/wk	30+ hr/wk	30+ hr/wk	30+ hr/wk
	Pressure psi (bar)	4000 (276)	4000 (276)	4000 (276)	4000 (276)
	Flow gpm (lpm)	4.0 (15)	4.0 (15)	4.0 (15)	4.0 (15)
	Cleaning Units (psi x gpm)	16000	16000	16000	16000
	Frame	Aluminum	Aluminum	Aluminum	Aluminum
	Weight lbs (kg)	92 (42)	99 (45)	132 (60)	132 (60)
	Water Pump	GP, Triplex Plunger Pump	CAT, Triplex Plunger Pump	GP, Triplex Plunger Pump	CAT, Triplex Plunger Pump
INCLUDES	Unloader Type	EZ Start, Adjustable Pressure External By-Pass	EZ Start, Adjustable Pressure External By-Pass	EZ Start, Adjustable Pressure External By-Pass	EZ Start, Adjustable Pressure External By-Pass
	Engine	Honda GX390	Honda GX390	Honda GX390	Honda GX390
	Hose Assembly	3/8 in (.95 cm) x 50 ft (15 m), non-marking w/ Quick Connects	3/8 in (.95 cm) x 50 ft (15 m), non-marking w/ Quick Connects	3/8 in (.95 cm) x 50 ft (15 m), non-marking w/ Quick Connects	3/8 in (.95 cm) x 50 ft (15 m), non-marking w/ Quick Connects
	Gun/Wand Assy (W/Qd)	Professional Grade Gun, 36 in (91 cm) w/ Quick Connect	Professional Grade Gun, 36 in (91 cm) w/ Quick Connect	Professional Grade Gun, 36 in (91 cm) w/ Quick Connect	Professional Grade Gun, 36 in (91 cm) w/ Quick Connect
	Chemical Injector	Quick Connects, Kit Included	Quick Connects, Kit Included	Quick Connects, Kit Included	Quick Connects, Kit Included
	Tips	4.0 Orifice 0° Red - 805543 15° Yellow - 805544 25° Green - 805545 40° White - 805546 Black - Chemical Injector - 805634	4.0 Orifice 0° Red - 805543 15° Yellow - 805544 25° Green - 805545 40° White - 805546 Black - Chemical Injector - 805634	4.0 Orifice 0° Red - 805543 15° Yellow - 805544 25° Green - 805545 40° White - 805546 Black - Chemical Injector - 805634	4.0 Orifice 0° Red - 805543 15° Yellow - 805544 25° Green - 805545 40° White - 805546 Black - Chemical Injector - 805634
	Warranty	Coverage against defects in material and workmanship: 1 year on all components 5 years on GP pump 3 years on Honda engine Lifetime on frame	Coverage against defects in material and workmanship: 1 year on all components 5 years on CAT Pump 3 years on Honda engine Lifetime on frame	Coverage against defects in material and workmanship: 1 year on all components 5 years on GP pump 3 years on Honda engine Lifetime on frame	Coverage against defects in material and workmanship: 1 year on all components 5 years on CAT Pump 3 years on Honda engine Lifetime on frame





Every Graco purchase comes  
with A+ Customer Service.

Questions?  
+61 3 9468 8500